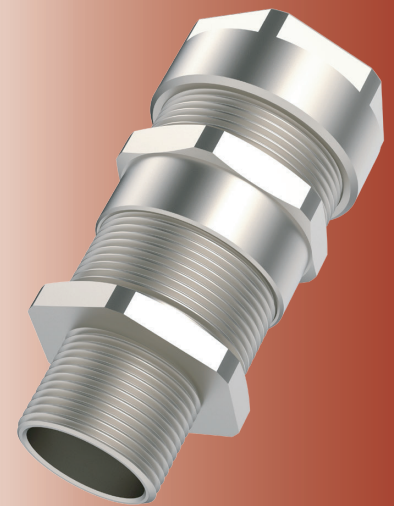








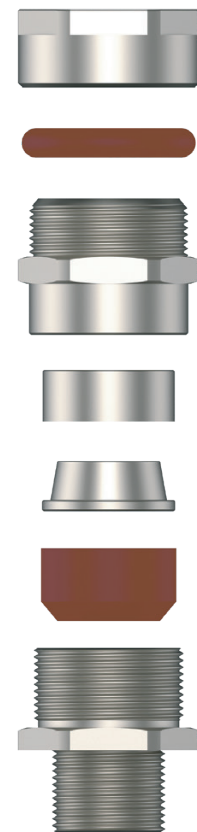
## Cable Glands for All Types of Armoured Cables



Technical Details			
<b>Material</b>	<b>Body Cap</b>	Brass, Brass Nickel Plated, Stainless Steel,	
	<b>Inner Parts</b>	Brass, Brass Nickel Plated, Stainless Steel,	
	<b>Seal</b>	Halogen Free Silicone	
	<b>O-ring</b>	Halogen Free Silicone	
<b>Ingress Protection Rating</b>	IP 68 - 5 Bar, 30 min IP 66		
<b>Operation Temperature</b>	<b>Seal Material</b>		
	<b>Silicone</b>	-60°C to +130°C	
<b>Equipment For</b>	Gas & Dust potentially explosive atmospheres		
<b>Suitable for use in</b>	Group I	Group II	Group III
<b>Equipment Marking</b>	Ex db I Mb; Ex eb I Mb; Ex db IIC Gb; Ex eb IIC Gb; Ex tb IIIC Db		
<b>Thread Type</b>	<ul style="list-style-type: none"> <li>• Metric (M) ISO Pitch 1,5 and 2,0 (for M80 and above) as standard.</li> <li>• NPT (N) ANSI ASME B1.20.1</li> <li>• Other thread types also available upon request.</li> </ul>		
<b>Cable Type</b>	SWA - SWB - STA - PWA - AWA - Shielded		
<b>Accessories</b>	• Lock nuts	• Shrouds	
	• Deluge Seal	• Lead Sheath Spring	
	• Gaskets (Washers)		
	• Serrated Washers		
	• Earth tags		
<b>Remarks</b>	• Accessories must be ordered separately.		

Approvals	Certificate Number	Standards
	CESI 21 ATEX 031X	EN 60079-0, -1, -7, -31
	IECEx CES 22.0009X	IEC 60079-0, -1, -7, -31
	2024312313000604	IEC 60079-0,-1,-7,-31
	TC RU C-TR.AA87.B.01120/23	GOCT 31610.0-2014 GOCT IEC 60079-1:2013 GOCT IEC 60079-31:2013
	DNV 23.0154 X	ABNT NBR IEC 60079-0:2013 ABNT NBR IEC 60079-1:2009 ABNT NBR IEC 60079-7:2008 ABNT NBR IEC 60079-31:2011
	TAE000004TA	IEC 60079-0,-1,-7,-31

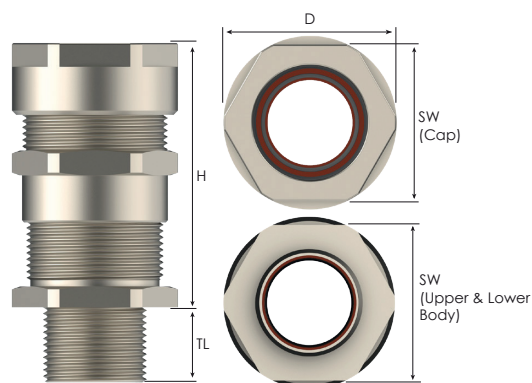
-For more information see our webpage  
-The standard marking consists ATEX & IECEx only. Marking acc. to other standards on request.



Order Coding											
Part Number	Material	Seal	-	Lead Sheath Washer	-	Gasket (Washer)	Serrated Washer	Locknut	Shroud	Earth Tag	Deluge Seal
Mandatory	Mandatory	Mandatory	-	Option	-	Option	Option	Option	Option	Option	Option
See table	B Brass BN Brass nickel plated X Stainless steel 316L	S Silicone	-	LSK Lead Sheath Washer	-	WS Silicone	WSR Serrated washer	L Lock nut	S Shroud	E Earth tag	D Deluge Seal
Example											
VOLOSM	BN	S	-	LSK	-	WS	WSR	L	S	E	D

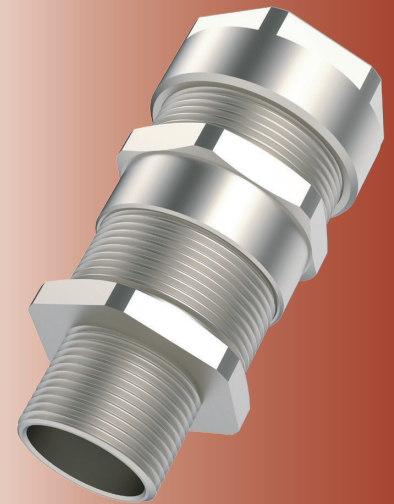
# VOLANS

## Cable Glands for All Types of Armoured Cables






Thread Type METRIC acc. to ISO 965 - 3											
Outer Thread Size (Male)	Clamping Range		Armour Wire Ø min-max mm	Shield Wire Ø min-max mm	Outer Thread Length TL mm	Spanner Width			Outer Ø D mm	max. Height H mm	Part Number
	Inner Sheath Ø min-max mm	Ø min-max mm				Cap SW Cap mm	Upper Body SW Upper Body mm	Lower Body SW Lower Body mm			
M12x1,5	3.0 - 8.0	5.5 - 12.0	0.8 - 1.25	0.2 - 0.8	15.0	22.0	22.0	19.0	24.0	57.0	VOL0SM
M16x1,5	3.0 - 8.0	5.5 - 12.0	0.8 - 1.25	0.2 - 0.8	15.0	22.0	22.0	19.0	24.0	57.0	VOL01SM
	6.0 - 12.0	9.0 - 16.0	0.8 - 1.25	0.2 - 0.8	15.0	24.0	24.0	24.0	26.5	57.0	VOL01M
M20x1,5	3.0 - 8.0	5.5 - 12.0	0.8 - 1.25	0.2 - 0.8	15.0	22.0	22.0	24.0	26.5	57.0	VOL1XSM
	6.0 - 12.0	9.0 - 16.0	0.8 - 1.25	0.2 - 0.8	15.0	24.0	24.0	24.0	26.5	57.0	VOL1SM
	6.0 - 14.0	12.0 - 20.0	0.8 - 1.25	0.2 - 0.8	15.0	30.0	30.0	30.0	33.0	60.0	VOL1M
M25x1,5	6.0 - 14.0	12.0 - 20.0	0.8 - 1.25	0.2 - 0.8	15.0	30.0	30.0	30.0	33.0	60.0	VOL2SM
	11.0 - 20.0	16.0 - 26.0	1.25 - 1.6	0.2 - 0.8	15.0	36.0	36.0	36.0	39.8	66.0	VOL2M
M32x1,5	11.0 - 20.0	16.0 - 26.0	1.25 - 1.6	0.2 - 0.8	15.0	36.0	36.0	36.0	39.8	66.0	VOL3SM
	16.0 - 26.5	20.0 - 33.0	1.6 - 2.0	0.2 - 0.8	15.0	46.0	46.0	46.0	51.0	76.0	VOL3M
M40x1,5	16.0 - 26.5	20.0 - 33.0	1.6 - 2.0	0.2 - 0.8	15.0	46.0	46.0	46.0	51.0	76.0	VOL4SM
	22.0 - 32.5	29.0 - 41.0	1.6 - 2.0	0.2 - 0.8	15.0	55.0	55.0	55.0	62.5	85.0	VOL4M
M50x1,5	22.0 - 32.5	29.0 - 41.0	1.6 - 2.0	0.2 - 0.8	15.0	55.0	55.0	55.0	62.5	85.0	VOL5SM
	29.0 - 44.0	36.0 - 52.0	1.8 - 2.5	0.2 - 1.0	15.0	65.0	65.0	65.0	74.5	100.0	VOL5M
M63x1,5	29.0 - 44.0	36.0 - 52.0	1.8 - 2.5	0.2 - 1.0	15.0	65.0	65.0	68.0	75.0	100.0	VOL6SM
	43.0 - 56.0	50.0 - 65.0	1.8 - 2.5	0.2 - 1.0	15.0	80.0	80.0	80.0	91.0	102.0	VOL6M
M75x1,5	43.0 - 56.0	50.0 - 65.0	1.8 - 2.5	0.2 - 1.0	15.0	80.0	80.0	80.0	106.0	102.0	VOL7SM
	54.0 - 68.0	61.0 - 78.0	1.8 - 2.5	0.2 - 1.0	15.0	95.0	95.0	95.0	106.0	115.0	VOL7M
M80x1,5	54.0 - 68.0	61.0 - 78.0	1.8 - 2.5	0.2 - 1.0	20.0	95.0	95.0	95.0	118.0	115.0	VOL80SM
	65.0 - 75.0	75.0 - 89.0	2.0 - 3.5	0.3 - 1.0	20.0	106.0	106.0	106.0	118.0	126.0	VOL80M
M90x1,5	54.0 - 68.0	61.0 - 78.0	1.8 - 2.5	0.2 - 1.0	20.0	95.0	95.0	95.0	118.0	115.0	VOL8SM
	65.0 - 78.0	75.0 - 89.0	2.0 - 3.5	0.3 - 1.0	20.0	106.0	106.0	106.0	118.0	126.0	VOL8M
M100x1,5	65.0 - 78.0	75.0 - 89.0	2.0 - 3.5	0.3 - 1.0	20.0	106.0	106.0	106.0	139.0	126.0	VOL9SM
	76.0 - 92.0	88.0 - 104.0	2.5 - 4.0	0.3 - 1.0	20.0	127.0	127.0	127.0	139.0	134.0	VOL9M

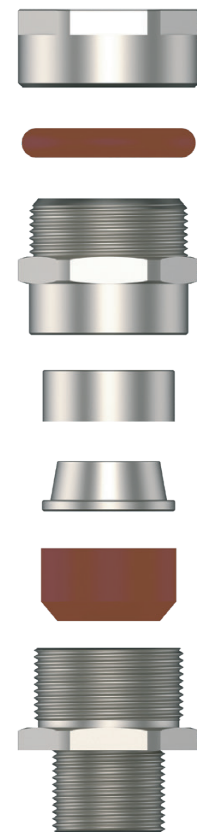
## Cable Glands for All Types of Armoured Cables



Technical Details		
<b>Material</b>	<b>Body Cap</b>	Brass, Brass Nickel Plated, Stainless Steel,
	<b>Inner Parts</b>	Brass, Brass Nickel Plated, Stainless Steel,
	<b>Seal</b>	Halogen Free Silicone
	<b>O-ring</b>	Halogen Free Silicone
<b>Ingress Protection Rating</b>	IP 68 - 5 Bar, 30 min IP 66	
<b>Operation Temperature</b>	<b>Seal Material</b>	
	<b>Silicone</b>	-60°C to +130°C
<b>Equipment For</b>	Gas & Dust potentially explosive atmospheres	
<b>Suitable for use in</b>	Group I Group II Group III	
<b>Equipment Marking</b>	Ex db I Mb; Ex eb I Mb; Ex db IIC Gb; Ex eb IIC Gb; Ex tb IIIC Db	
<b>Thread Type</b>	<ul style="list-style-type: none"> <li>• Metric (M) ISO Pitch 1,5 and 2,0 (for M80 and above) as standard.</li> <li>• NPT (N) ANSI ASME B1.20.1</li> <li>• Other thread types also available upon request.</li> </ul>	
<b>Cable Type</b>	SWA - SWB - STA - PWA - AWA - Shielded	
<b>Accessories</b>	• Lock nuts	• Shrouds
	• Deluge Seal	• Lead Sheath Spring
	• Gaskets (Washers)	
	• Serrated Washers	
	• Earth tags	
<b>Remarks</b>	• Accessories must be ordered separately.	

Approvals	Certificate Number	Standards
	CESI 21 ATEX 031X	EN 60079-0, -1, -7, -31
	IECEx CES 22.0009X	IEC 60079-0, -1, -7, -31
	2024312313000604	IEC 60079-0,-1,-7,-31
	TC RU C-TR.AA87.B.01120/23	GOCT 31610.0-2014 GOCT IEC 60079-1:2013 GOCT IEC 60079-31:2013
	DNV 23.0154 X	ABNT NBR IEC 60079-0:2013 ABNT NBR IEC 60079-1:2009 ABNT NBR IEC 60079-7:2008 ABNT NBR IEC 60079-31:2011
	TAE000004TA	IEC 60079-0,-1,-7,-31

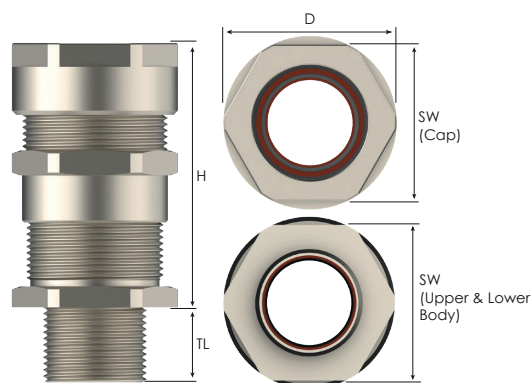
-For more information see our webpage  
-The standard marking consists ATEX & IECEx only. Marking acc. to other standards on request.



Order Coding											
Part Number	Material	Seal	-	Lead Sheath Washer	-	Gasket (Washer)	Serrated Washer	Locknut	Shroud	Earth Tag	Deluge Seal
Mandatory	Mandatory	Mandatory	-	Option	-	Option	Option	Option	Option	Option	Option
See table	B Brass BN Brass nickel plated X Stainless steel 316L	S Silicone	-	LSK Lead Sheath Washer	-	WS Silicone	WSR Serrated washer	L Lock nut	S Shroud	E Earth tag	D Deluge Seal
Example											
VOLOSM	BN	S	-	LSK	-	WS	WSR	L	S	E	D

# VOLANS

## Cable Glands for All Types of Armoured Cables



Thread Type NPT acc. to ANSI ASME B1.20.1											
Outer Thread Size	Clamping Range		Armour Wire Ø min-max mm	Shield Wire Ø min-max mm	Outer Thread Length TL mm	Spanner Width			Outer Ø D mm	max. Height H mm	Part Number
	Inner Sheath Ø min-max mm	Ø min-max mm				Cap SW mm	Upper Body SW mm	Lower Body SW mm			
1/4"	3.0 - 8.0	5.5 - 12.0	0.8 - 1.25	0.2 - 0.8	16.0	22.0	22.0	19.0	24.0	57.0	VOL0SN
3/8"	3.0 - 8.0	5.5 - 12.0	0.8 - 1.25	0.2 - 0.8	16.0	22.0	22.0	19.0	24.0	57.0	VOL01SN
	6.0 - 12.0	9.0 - 16.0	0.8 - 1.25	0.2 - 0.8	16.0	24.0	24.0	24.0	26.5	57.0	VOL01N
1/2"	3.0 - 8.0	5.5 - 12.0	0.8 - 1.25	0.2 - 0.8	21.0	22.0	22.0	24.0	26.5	57.0	VOL1XSN
	6.0 - 12.0	9.0 - 16.0	0.8 - 1.25	0.2 - 0.8	21.0	24.0	24.0	24.0	26.5	57.0	VOL1SN
	6.0 - 14.0	12.0 - 20.0	0.8 - 1.25	0.2 - 0.8	21.0	30.0	30.0	30.0	33.0	60.0	VOL1N
3/4"	6.0 - 14.0	12.0 - 20.0	0.8 - 1.25	0.2 - 0.8	21.0	30.0	30.0	30.0	33.0	60.0	VOL2SN
	11.0 - 20.0	16.0 - 26.0	1.25 - 1.6	0.2 - 0.8	21.0	36.0	36.0	36.0	39.8	66.0	VOL2N
1"	11.0 - 20.0	16.0 - 26.0	1.25 - 1.6	0.2 - 0.8	26.0	36.0	36.0	36.0	39.8	66.0	VOL3SN
	16.0 - 26.5	20.0 - 33.0	1.6 - 2.0	0.2 - 0.8	26.0	46.0	46.0	46.0	51.0	76.0	VOL3N
1 1/4"	16.0 - 26.5	20.0 - 33.0	1.6 - 2.0	0.2 - 0.8	28.0	46.0	46.0	46.0	51.0	76.0	VOL4SN
	22.0 - 32.5	29.0 - 41.0	1.6 - 2.0	0.2 - 0.8	28.0	55.0	55.0	55.0	62.5	85.0	VOL4N
1 1/2"	22.0 - 32.5	29.0 - 41.0	1.6 - 2.0	0.2 - 0.8	28.0	55.0	55.0	55.0	62.5	85.0	VOL5SN
	29.0 - 42.3	36.0 - 52.0	1.8 - 2.5	0.2 - 1.0	28.0	65.0	65.0	65.0	74.5	100.0	VOL5N
2"	29.0 - 44.0	36.0 - 52.0	1.8 - 2.5	0.2 - 1.0	28.0	68.0	65.0	65.0	75.0	100.0	VOL6SN
	43.0 - 54.3	50.0 - 65.0	1.8 - 2.5	0.2 - 1.0	28.0	80.0	80.0	80.0	91.0	102.0	VOL6N
2 1/2"	43.0 - 56.0	50.0 - 65.0	1.8 - 2.5	0.2 - 1.0	41.0	80.0	80.0	80.0	106.0	102.0	VOL7SN
	54.0 - 65.3	61.0 - 78.0	1.8 - 2.5	0.2 - 1.0	41.0	95.0	95.0	95.0	106.0	115.0	VOL7N
3"	54.0 - 68.0	61.0 - 78.0	1.8 - 2.5	0.2 - 1.0	43.0	95.0	95.0	95.0	118.0	115.0	VOL80SN
	65.0 - 75.0	75.0 - 89.0	2.0 - 3.5	0.3 - 1.0	43.0	106.0	106.0	106.0	118.0	126.0	VOL80N
3 1/2"	65.0 - 78.0	75.0 - 89.0	2.0 - 3.5	0.3 - 1.0	43.0	106.0	106.0	106.0	139.0	126.0	VOL9SN
	76.0 - 92.0	88.0 - 104.0	2.5 - 4.0	0.3 - 1.0	43.0	127.0	127.0	127.0	139.0	134.0	VOL9N
4"	65.0 - 78.0	75.0 - 89.0	2.0 - 3.5	0.3 - 1.0	44.0	106.0	106.0	106.0	139.0	126.0	VOL10SN
	76.0 - 92.0	88.0 - 104.0	2.5 - 4.0	0.3 - 1.0	44.0	127.0	127.0	127.0	139.0	134.0	VOL10N